



Burgers



WHY BRAVEHEART?

Braveheart Black Angus Beef® redefines premium beef, setting a higher bar for quality, tenderness and taste. Our beef starts with cattle born on family farms in the U.S. and raised in the Midwest with an emphasis on humane practices and sustainability. They are processed in state-of-the-art facilities that focus on quality and consistency. Based on our heralded PathProven® process, Braveheart is available exclusively through Performance Foodservice in a full line of beef, spanning carefully cut steaks to mouthwatering burgers. No matter your operation's needs, you can depend on Braveheart Black Angus Beef to be a cut above extraordinary every time.

Braveheart stands out from the rest because it was designed to exceed operators' expectations for quality beef. We spent time talking with chefs and restaurant owners, asking them about their "beef" with the other beef brands on the market, and about what they were looking for in a premium line. They unanimously focused on four critical areas of importance: Taste, Quality, Trim and Consistency. Our unique PathProven® program enables Braveheart to deliver on all four—it's our standard of excellence.

Braveheart's commitment to quality and safety is unmatched in the premium beef industry. Great pride is taken in the state-of-the-art processing facilities that are among the most modern in the nation. Here, strict sanitation and safety standards are followed to ensure that Braveheart ground beef products are of the highest consistency and quality each and every time. Immediate processing assures an unprecedented level of freshness. Make Braveheart Beef the confident choice for you and your customers.

#NH702 - 24/8oz.

Braveheart Angus Beef 80/20 Smash Balls

#NH730 - 20/8oz.

Braveheart Angus Beef 81/19 Round Patty



Braveheart[®] GOLD CLUB



BEEF UP YOUR REWARDS WITH THE BRAVEHEART GOLD CLUB

FRESH BOXED BEEF

GOLD

\$0.05/LB

monthly cash back reward

Members who purchase between 60-299 lbs. per week will fall into this level.

PLATINUM

\$0.10/LB

monthly cash back reward

Members who purchase between 300-649 lbs. per week will fall into this level.

DIAMOND

\$0.15/LB

monthly cash back reward

Members who purchase 650 lbs. or more per week will fall into this level.

FRESH GROUND BEEF

GOLD

\$0.02/LB

monthly cash back reward

Members who purchase between 30-149 lbs. per week will fall into this level.

PLATINUM

\$0.06/LB

monthly cash back reward

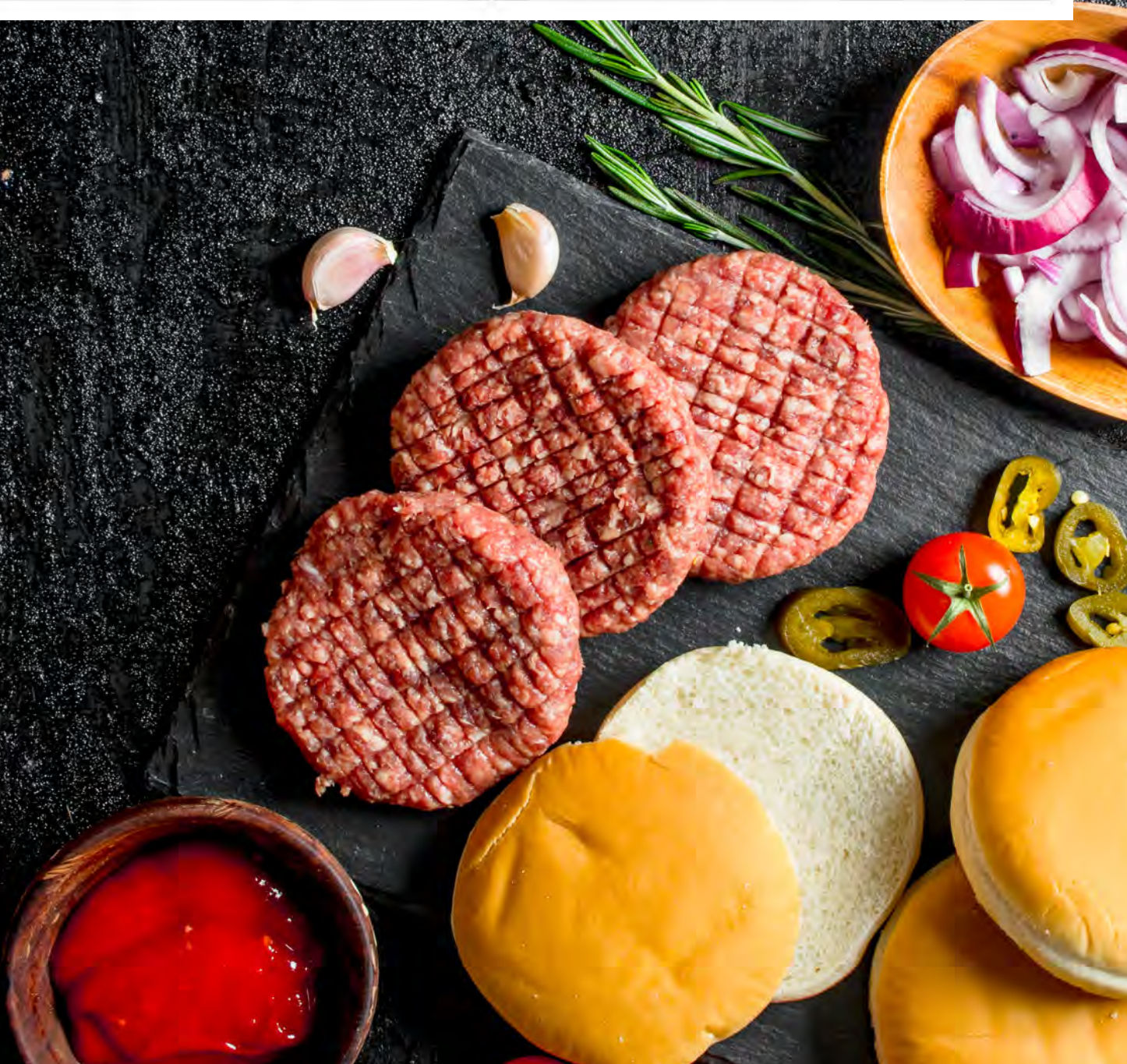
Members who purchase between 150-324 lbs. per week will fall into this level.

DIAMOND

\$0.09/LB

monthly cash back reward

Members who purchase 325 lbs. or more per week will fall into this level.



PRAIRIE CREEK



Prairie Creek® is a trusted brand that includes many popular, great American favorites that make it easy for operators to serve center-of-plate, beef, pork and veal items such as delicious bacon, burgers and hotdogs. Prairie Creek® delivers consistent quality and flavor, along with the advantage of added profit that operators can bank on!

FRESH BURGERS

- #14742** - 10 lb.
Beef Ground Patty Shape Angus Chuck 2-1 80/20 Round 3/4"
- #14954** - 10 lb.
Beef Ground Patty Shape Steak Burger 3-1 80/20 Round 3/4"
- #15006** - 10 lb.
Beef Ground Patty Shape Steak Burger 2-1 80/20 3/4"
- #T3008** - 40/4oz.
Beef Ground Patty Shape Steak Burger 4-1 3/8"

FROZEN BURGERS

- #36026** - 15 lb.
Beef Ground Patty Shape 3-1 75/25 Natural 100% Pure Ground
- #36046** - 15 lb.
Beef Ground Patty Shape 4-1 Avg 75/25 Natural 100% Pure Ground
- #36076** - 15 lb.
Beef Ground Patty Shape 4-1 78/22 Round 100% Pure Ground
- #46614** - 15 lb.
Beef Steak Chopped Patty Shape 3-1 Average 5.3Oz 78/22 Natural
- #46674** - 15 lb.
Beef Steak Chopped 2-1 78/22 Natural
- #45310** - 15 lb.
Beef Ground Patty Shape Steak Burger Angus Chuck 2-1 Natural Choice
- #46998** - 15 lb.
Beef Ground Patty Shape Steak Burger Angus Chuck 3-1 Natural Choice
- #23132** - 15 lb.
Beef Ground Patty Shape Steak Burger Angus Chuck 4-1 Natural Choice
- #48886** - 15 lb.
Beef Ground Patty Shape 2-1 78/22 Natural Seasoned Scored Cheyenne
- #48898** - 15 lb.
Beef Ground Patty Shape 3-1 78/22 Natural Seasoned Scored Cheyenne
- #48928** - 15 lb.
Beef Ground Patty Shape 4-1 78/22 Natural Seasoned Scored Cheyenne
- #39598** - 4/5 lb.
Beef Ground Bulk 90/10 100% Pure Ground

PLANT BASED BURGERS



#80436 - 48/4.25 oz.
Spicy Chipotle Black Bean Veggie Burger



#N1956 - 10 lb.
4 oz. Vegetable Burger Patty



#V5988 - 48/4.2 oz.
Black Bean Veggie Burger

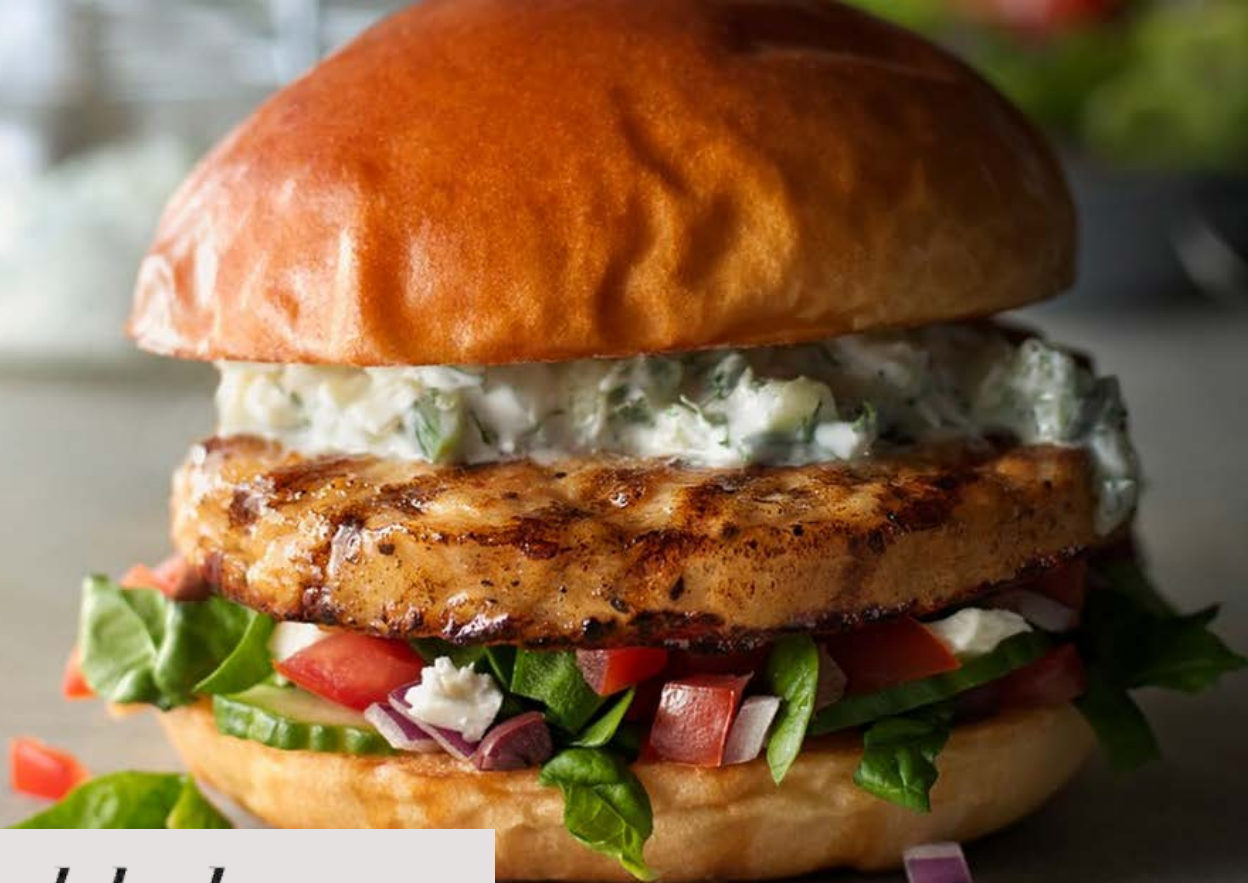


#MV620 - 10 lb.
4 oz. Meatless Burger Patty



#F6350 - 40/4oz.
Ground Beef Pizza Burger Patty





#CH144 - 2/5 lb.
Fully Cooked Burger Shaped Chicken Patty

TOPPING IDEAS

#61920 - 9/2 lb.
Jalapeno & Onion Breaded Toothpicks

#H3952 - 12/2 lb.
Diced Avocado

#J9354 - 2/5lb
Wisconsin Cheese Curds

#61578 - 6/2.5 lb.
Flame Roasted Corn & Peppers

#61634 - 6/2.5 lb.
Roasted Pepper & Onion Strips

SLICED CHEESE

#71296 - 10/1 lb.
Provolone Cheese 1oz.

#70264 - 10/1 lb.
Provolone Cheese .75oz.

#HN346 - 12/1 lb.
Provolone Cheese .5oz.

#26036 - 12/1 lb.
Sharp Cheddar .75oz.

#HG490 - 12/1 lb.
Mild Cheddar 1oz.

#70956 - 4/5 lb.
Yellow American 120 Slice

#70036 - 4/5 lb.
Yellow American 160 Slice

#72976 - 4/5 lb.
Yellow American 160 Slice

#70114 - 4/5 lb.
Yellow American 120 Slice

#70114 - 4/5 lb.
American Swiss 160 Slice

#26040 - 12/1 lb.
Swiss 8oz.

#70954 - 8/1.5 lb.
Mozzarella .75oz.

#CA540 - 4/5 lb.
Pepper Jack 120 Slice

COBBLESTREET[®]
MIKT



Check out our other catalogs online!

Scan the QR Code above or visit
[Performancefoodservice.com/
Our-Locations/Pittsburgh](https://Performancefoodservice.com/Our-Locations/Pittsburgh)



2022

Performance Pittsburgh
226 East View Drive | Mount Pleasant, PA 15666 | 724.696.2200